

# CEMENTING PLUGS & BASKETS

8 - 10 - 11

Page 92

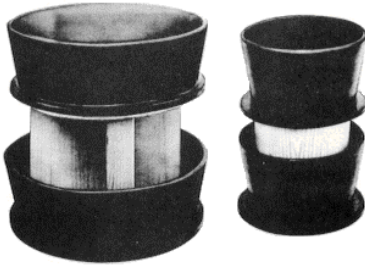
DEAN BENNETT SUPPLY CO  
Toll Free : 800 - 621 - 4291  
PRICES ARE YOUR NET COSTS

## TOP & BOTTOM WOOD CEMENTING PLUGS

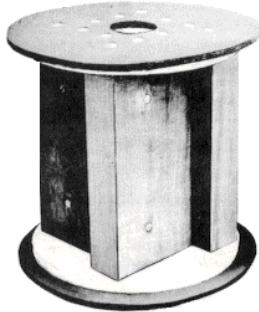
Our wood cementing plugs are designed for rugged dependability. These plugs are constructed from Redwood, high grade plywood and specially compounded rubber cups.

**TOP WOOD PLUGS** are designed with a one-piece cup and wiper element at both top and bottom of the plug. Three core designs are used for top and bottom plugs. A solid core is used for casing sizes 4-1/2" through 6-5/8". A pinwheel design is employed for casing sizes 7" through 13-3/8". An octagonal core design with solid wood hub and eight spokes is used for 16" and 20" casing.

**BOTTOM WOOD PLUGS** are constructed with wiper discs at top and bottom. The core designs are the same as top plugs except that solid cores are drilled for slurry passage. The rubber diaphragm covering the center hole is designed with a controlled physical properties profile that allows conventional pump-down operations. Additional pressure ruptures the diaphragm allowing the cement slurry to flow through.



TOP WOOD  
CEMENTING PLUGS



BOTTOM WOOD  
CEMENTING PLUG

TOP WOOD CEMENTING PLUGS		
\$ 85.50	4" Plug	for 4-1/2" OD Casing - plug itself is 4-1/4" OD and 8-1/2" in length 4TWCP
\$ 55.00	4" Rubber Plug	like wooden plug above, but rubber constructed 4TWCP RUBBER
\$ 87.25	5" Plug	for 5-9/16" OD Casing - plug itself is 5" OD and 8-1/2" in length 5TWCP
\$ 89.50	6" Plug	for 6-5/8" OD Casing - plug itself is 6-1/4" OD and 8-3/4" in length 6TWCP
\$ 89.50	7" Plug	for 7" OD Casing - plug itself is 6-1/2" OD and 8-3/4" in length 7TWCP
\$ 103.00	8" Plug	for 8-5/8" OD Casing - plug itself is 8-1/4" OD and 9-3/4" in length 8TWCP
\$ 167.00	10" Plug	for 10-3/4" OD Casing - plug itself is 10-1/4" OD and 10-3/4" in length 10TWCP
\$ 205.00	12" Plug	for 12-3/4" OD Casing - plug itself is 12-1/4" OD and 12-3/4" in length 12TWCP

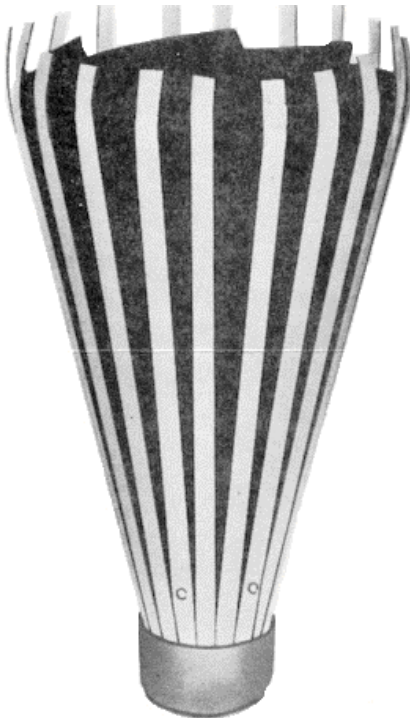
## BOTTOM WOOD CEMENTING PLUGS

\$ 74.50	4BWCPRUBBER
\$ 95.00	5BWC Wood still in stock
\$ 105.00	6BWC Wood still in stock
\$ 122.00	7BWCPRUBBER
\$ 128.00	8BWCPRUBBER

**WOODEN BOTTOM PLUGS NO LONGER MADE  
LIMITED TO STOCK ON HAND  
RUBBER BOTTOM PLUGS AVAILABLE**

## STEEL FINGER CEMENTING BASKETS

Our cementing basket is constructed of flexible spring steel ribs and reinforced rubber overlapping liners. The basket may be run on casing, tubing or liners and will effectively seal off zones below the basket from contamination by cement slurry. The basket can be slipped over the run-in string and the basket's position determined either by couplings at the ends of the joint or by stop rings which can be provided. When installed on a welded string of beveled end steel casing the cementing basket can be welded to the casing itself.



STEEL FINGER  
CEMENTING BASKET

## SPECIAL ORDER CEMENTING BASKETS

\$ 176.75	2" Basket	for 2-3/8" OD casing - hole size 3-7/8" min to 8" max	
\$ 186.25	2-1/2" Basket	for 2-7/8" OD casing - hole size 4-1/4" min to 10" max	
\$ 207.00	3" Basket	for 3-1/2" OD casing - hole size 5" min to 11" max	
\$ 222.50	4" Basket	for 4-1/2" OD casing - hole size 5-3/4" min to 12" max	4SFCB
\$ 245.00	5" Basket	for 5-9/16" OD casing - hole size 6-3/4" min to 14" max	5SFCB
\$ 279.25	6" Basket	for 6-5/8" OD casing - hole size 7-7/8" min to 15-1/2" max	6SFCB
\$ 279.25	7" Basket	for 7" OD casing - hole size 8-1/4" min to 16" max	7SFCB
\$ 334.50	8" Basket	for 8-5/8" OD casing - hole size 10-1/2" min to 18" max	8SFCB
\$ 403.00	10" Basket	for 10-3/4" OD casing - hole size 12" min to 18" max	
\$ 477.00	12" Basket	for 12-3/4" OD casing - hole size 13-3/4" min to 18" max	
\$ 713.00	16" Basket	for 16" OD casing - hole size 18" min to 24" max	

Call for pricing on cementing baskets for special oilfield tubing sizes

When you are unable to weld stops, or use a coupling on your pipe to install centralizers or cementing baskets, we can special order Hinged Rings. Use 2 Hinged Rings per centralizer or cementing basket, one below and one above.